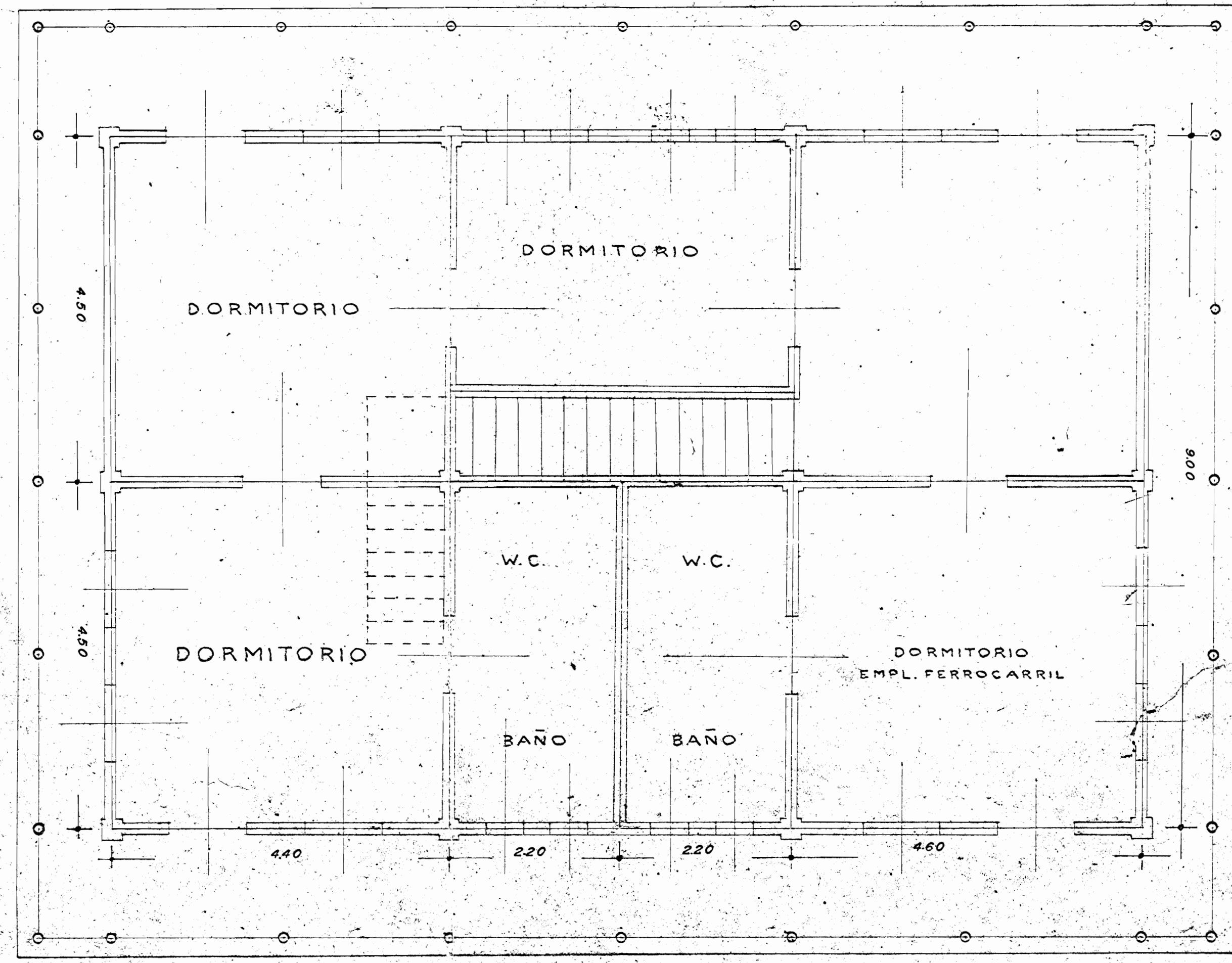


PLANTA BAJA



PLANTA ALTA

INCOFER
 ESTACION DE CALDERA
 E-282
 ESCALA, 1:50
 AGOSTO 1937

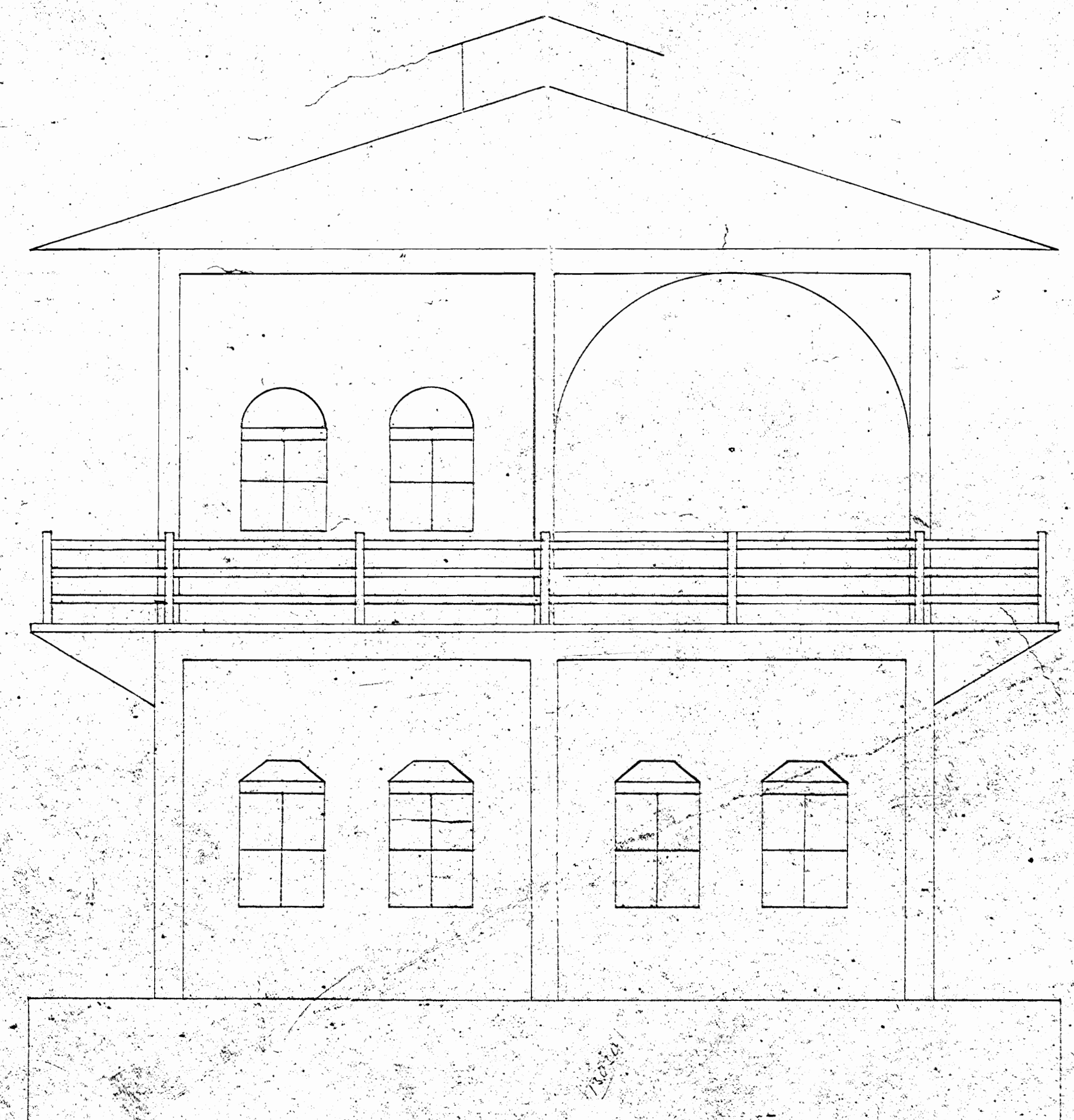
[Signature]
 Ing. Jefe

[Signature]
 Auxiliar

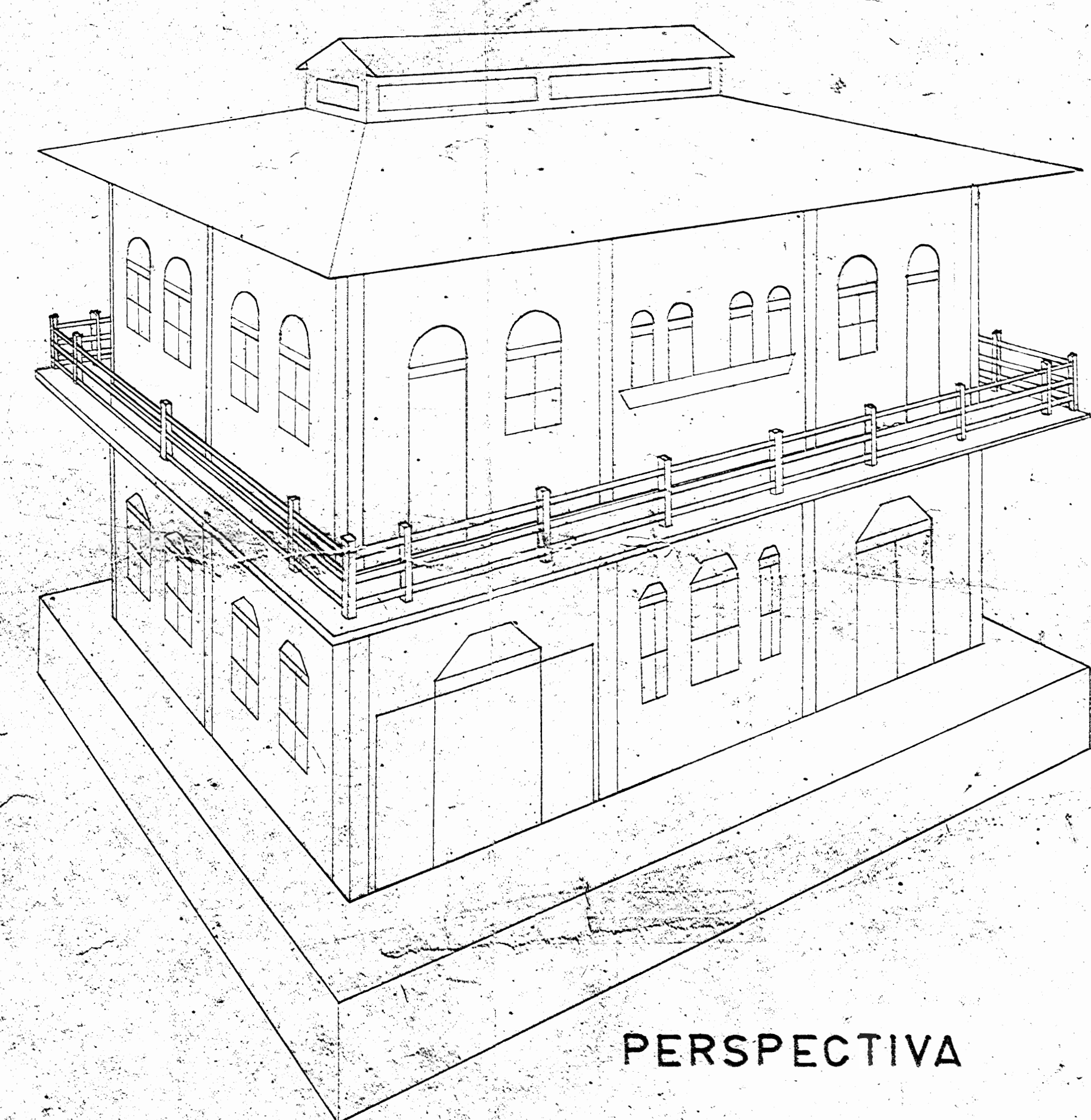
Vº Bº
[Signature]
 Adm. Gral.



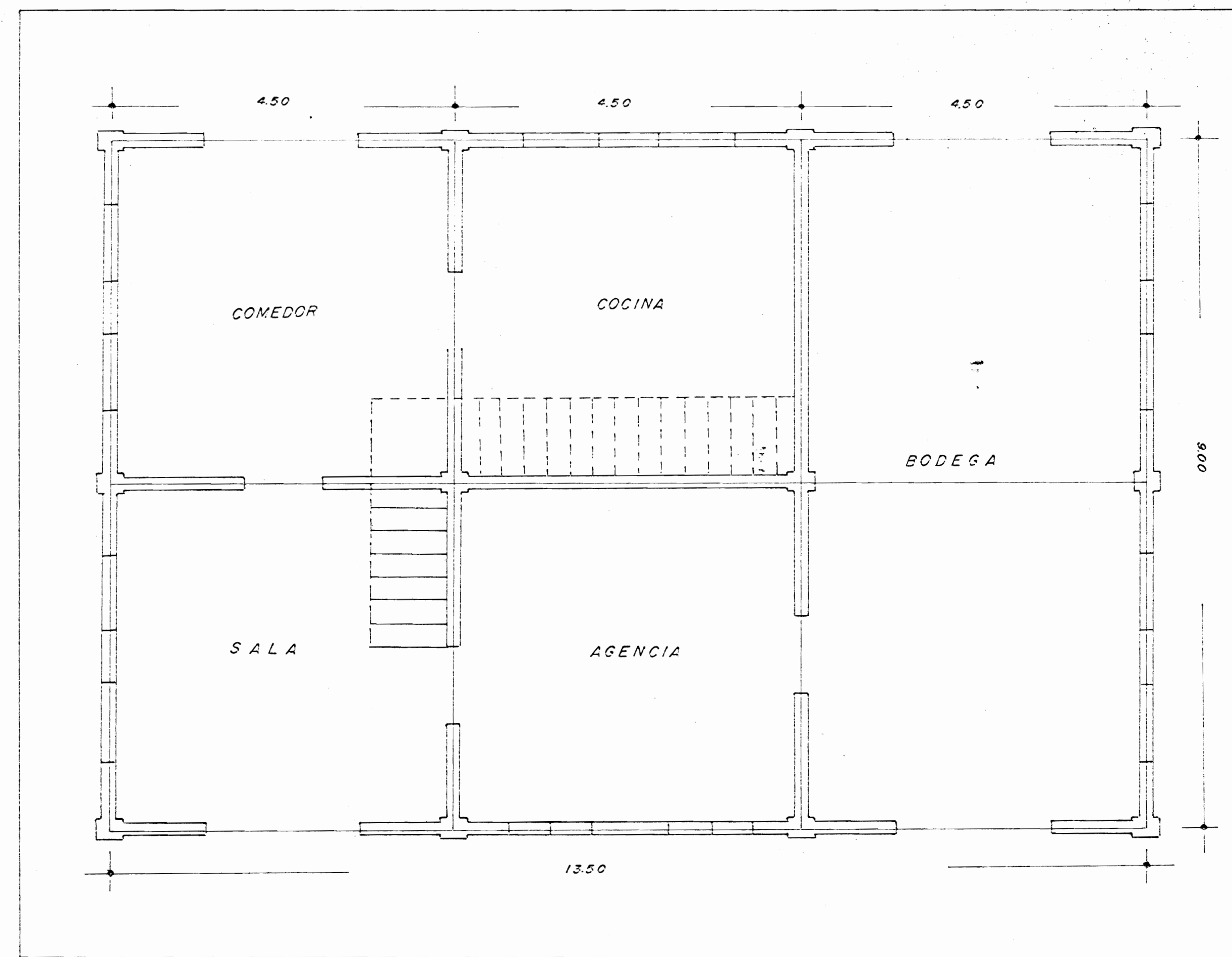
FACHADA



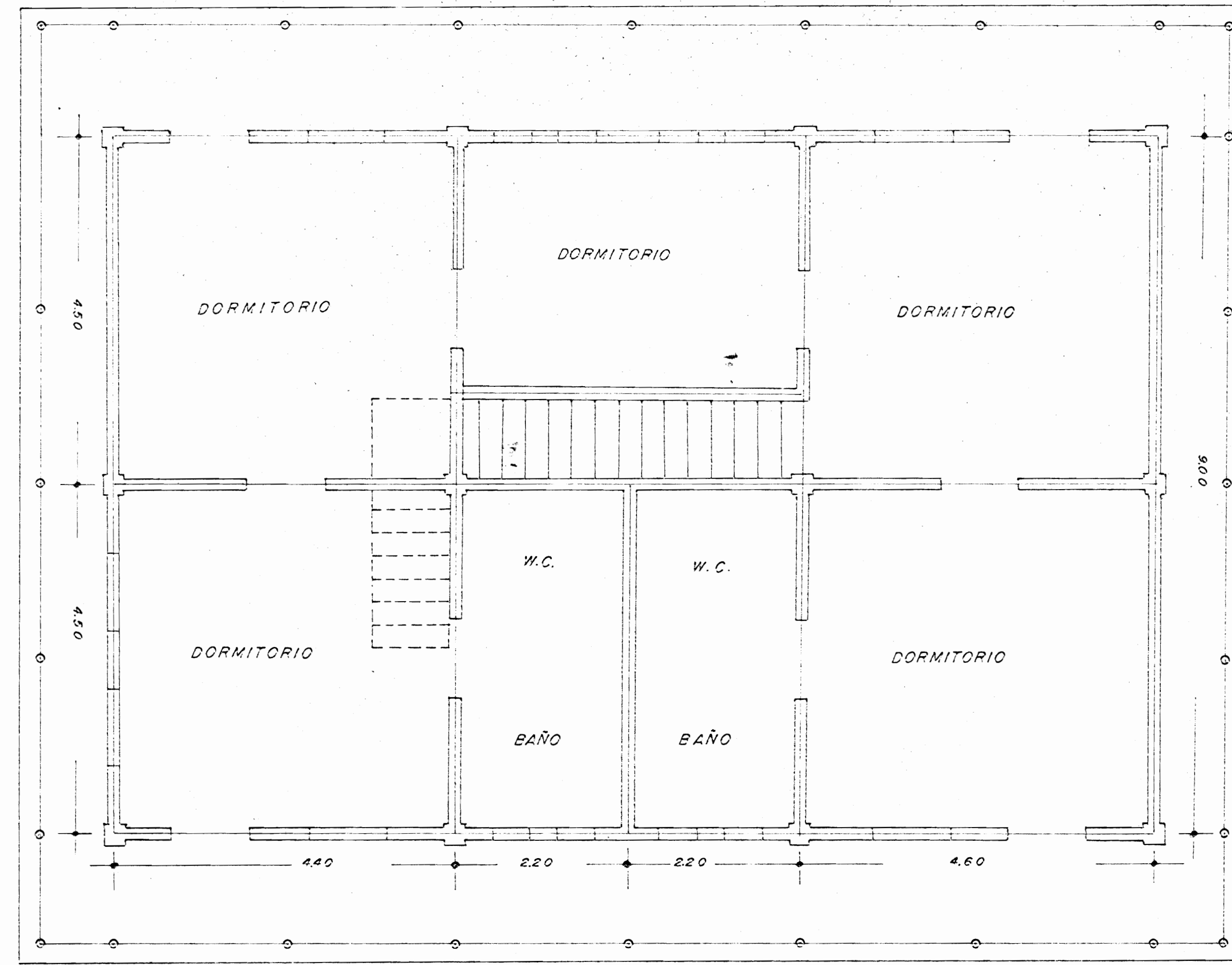
ELEVACION OESTE



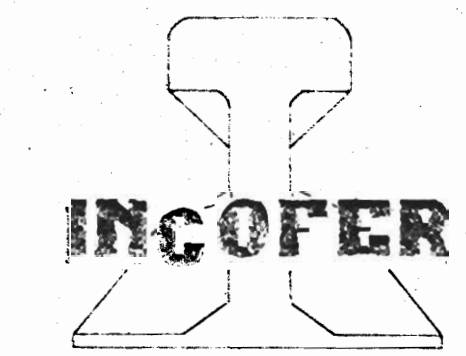
PERSPECTIVA



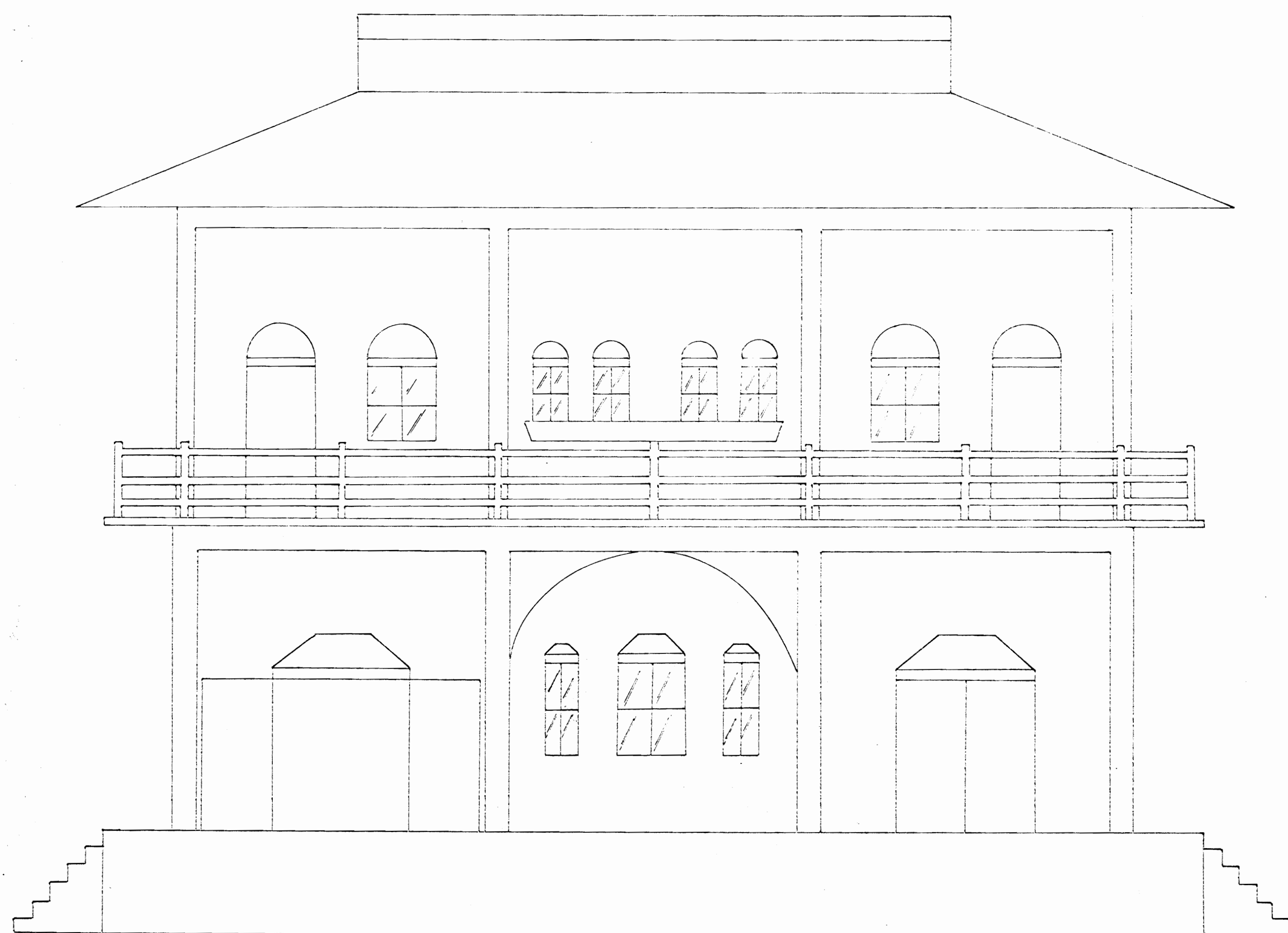
PLANTA BAJA ESC: 1:50



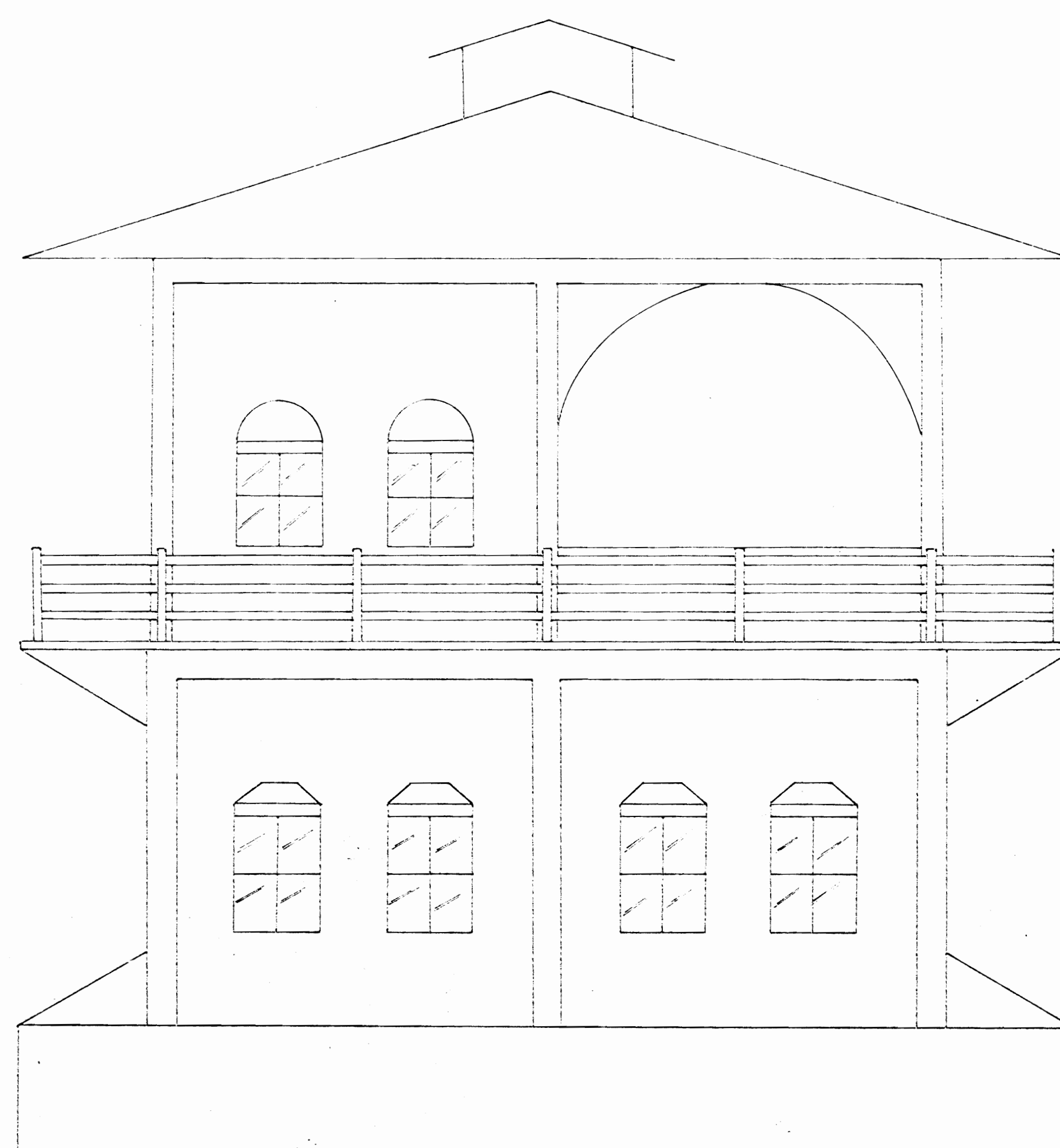
PLANTA ALTA ESC: 1:50



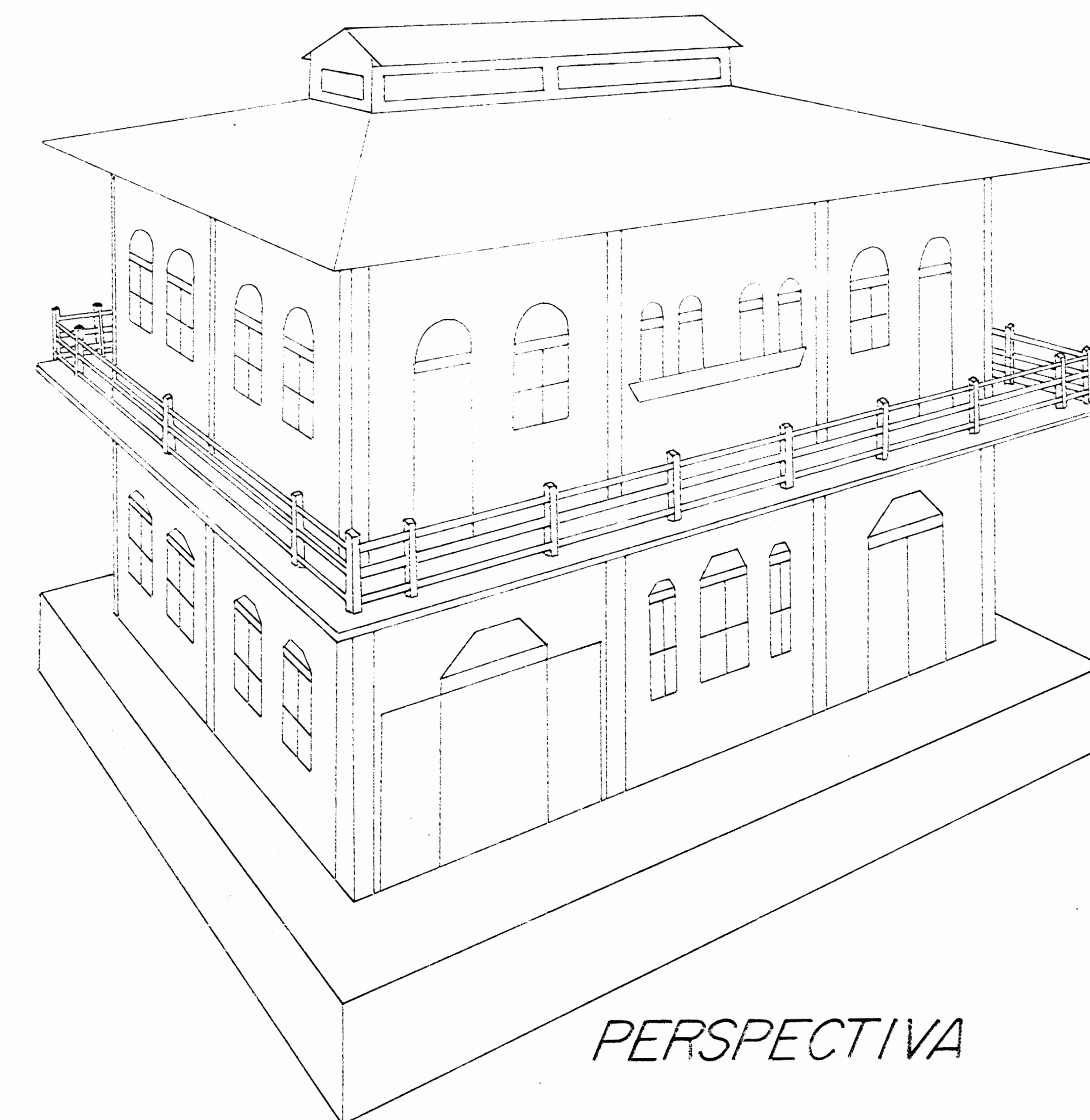
INSTITUTO COSTARRICENSE DE FERROCARRILES
 ESTACION DE CALDERA
 ESCALAS INDICADAS AGOSTO 1937
 RECONSTRUIDO MARZO 1988
 DIBUJO: C. CORTES
 E-282



FACHADA ESC: 1:50



ELEVACION OESTE ESC: 1:50



PERSPECTIVA