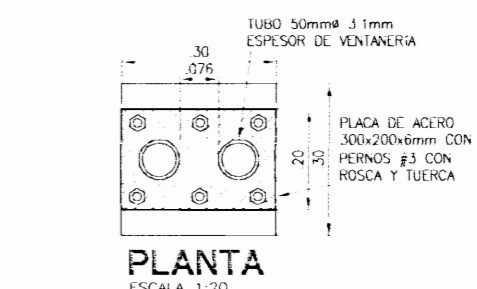
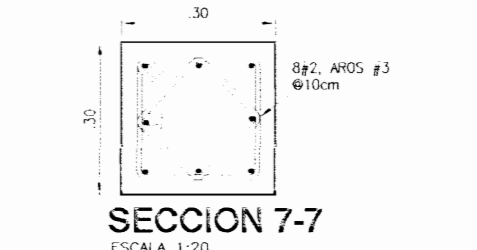


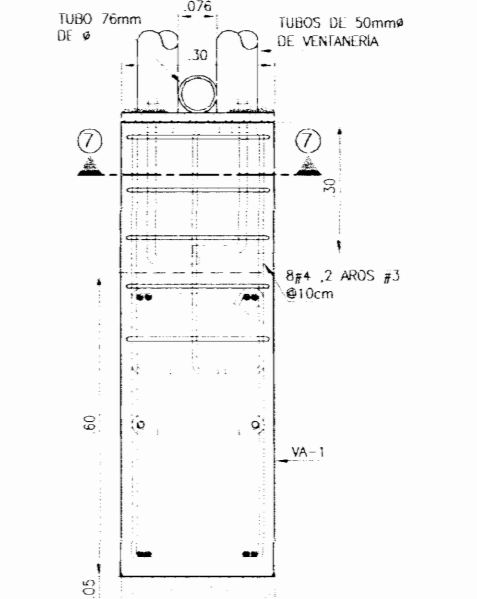
**PLANTA DE CIMIENTOS Y COLUMNAS**  
ESCALA 1:20



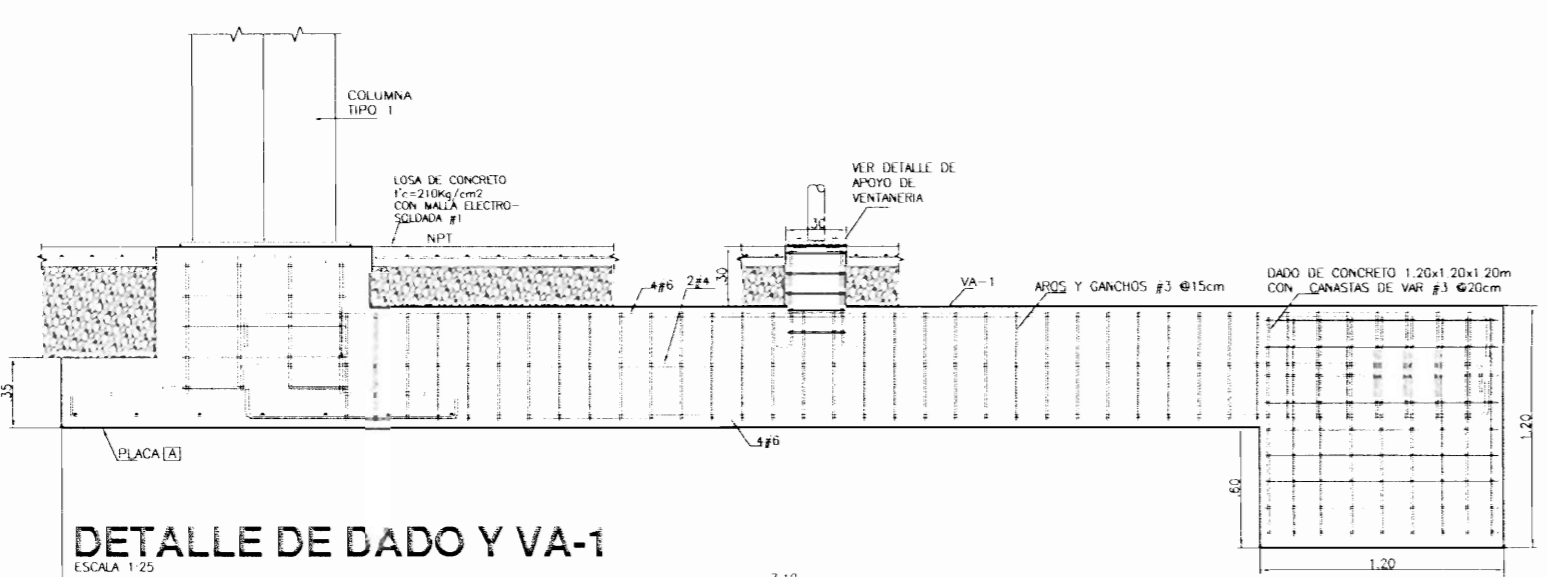
**PLANTA**  
ESCALA 1:20



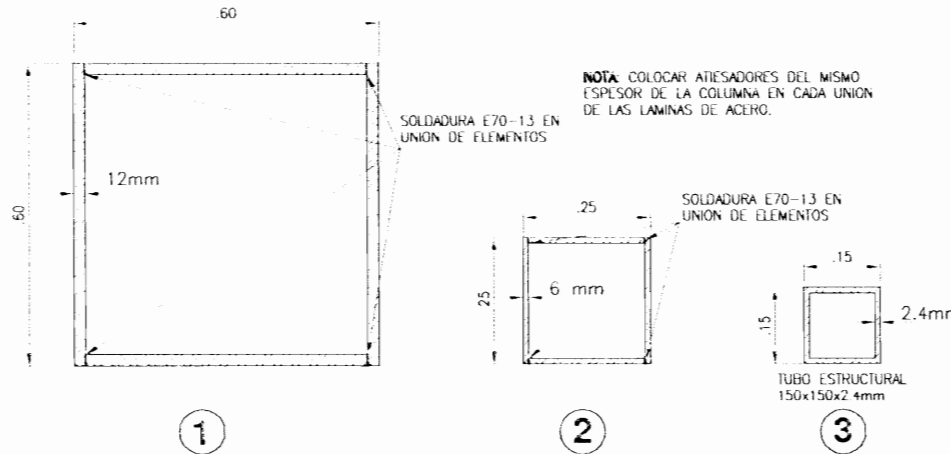
**SECCION 7-7**  
ESCALA 1:20



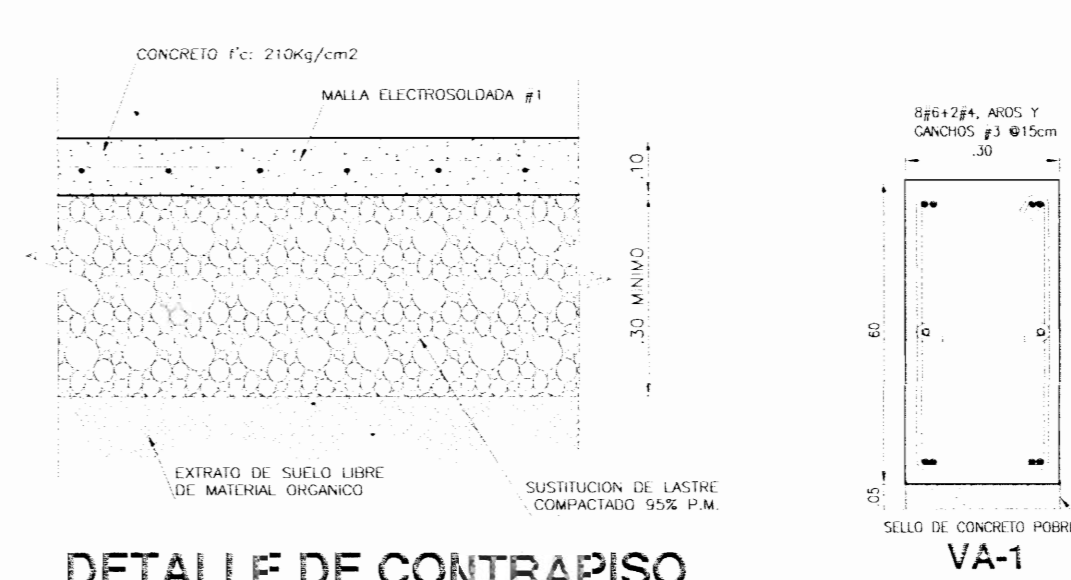
**DETALLE APOYO DE VENTANERIA**  
ESCALA 1:20



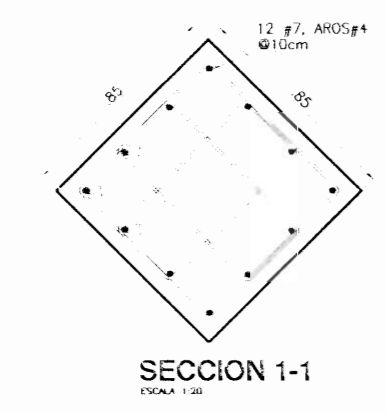
**DETALLE DE DADO Y VA-1**  
ESCALA 1:25



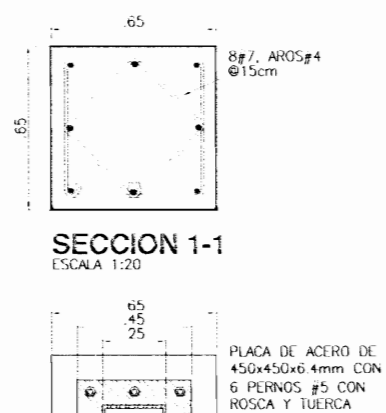
**DETALLE DE COLUMNAS**  
ESCALA 1:10



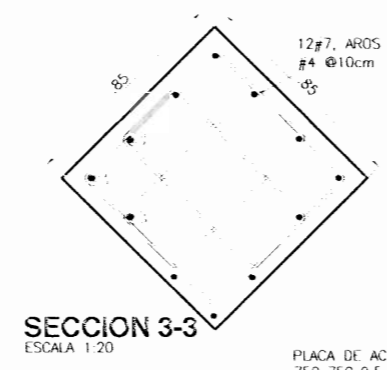
**DETALLE DE CONTRAPISO**  
ESCALA 1:10



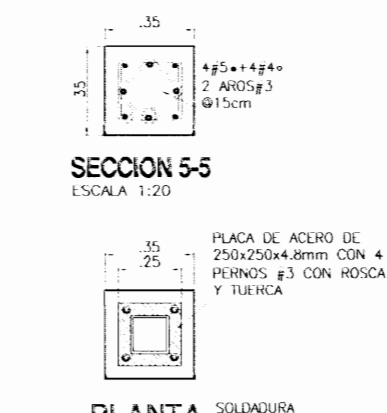
**SECCION 1-1**  
ESCALA 1:20



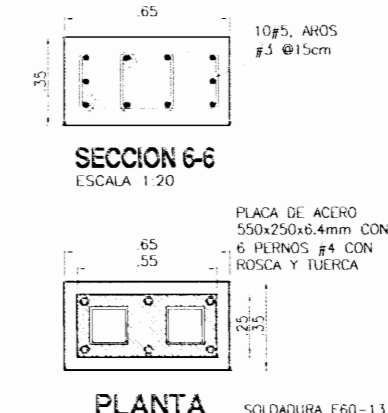
**SECCION 1-1**  
ESCALA 1:20



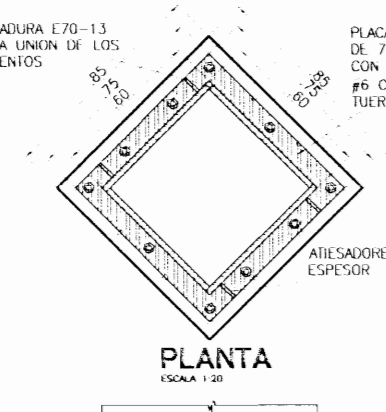
**SECCION 3-3**  
ESCALA 1:20



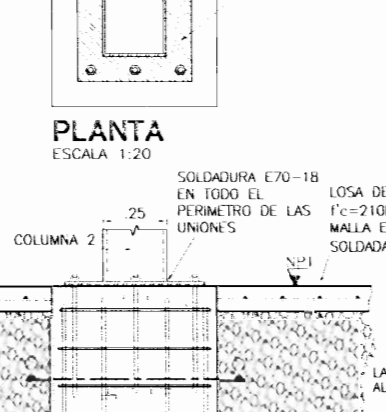
**SECCION 5-5**  
ESCALA 1:20



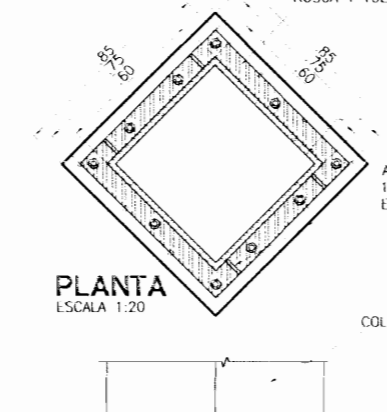
**SECCION 6-6**  
ESCALA 1:20



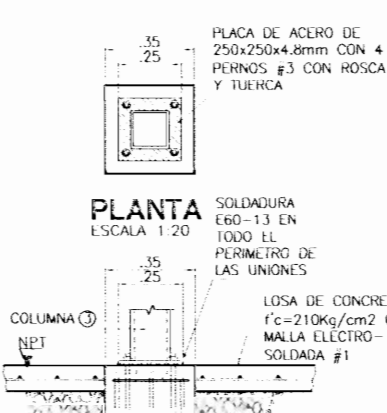
**PLANTA**  
ESCALA 1:20



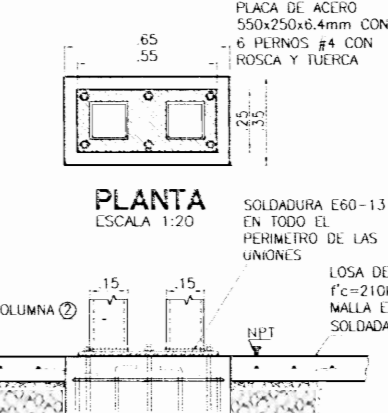
**PLANTA**  
ESCALA 1:20



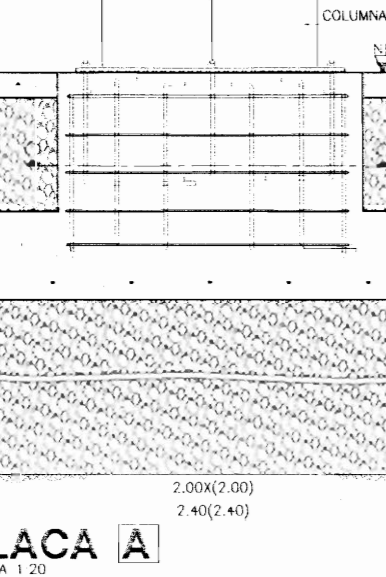
**PLANTA**  
ESCALA 1:20



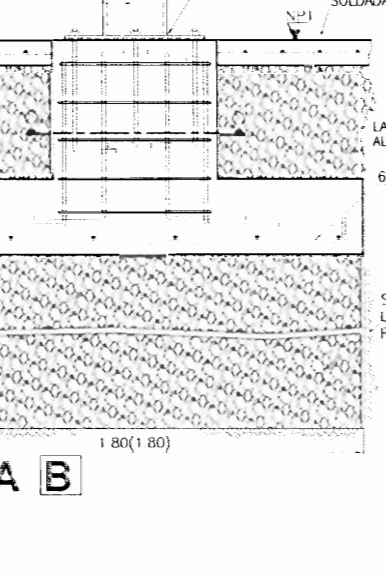
**PLANTA**  
ESCALA 1:20



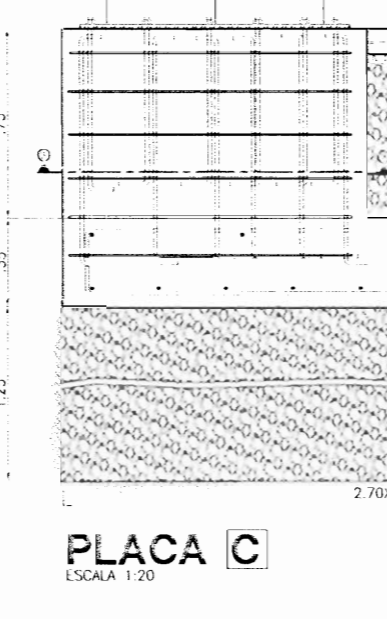
**PLANTA**  
ESCALA 1:20



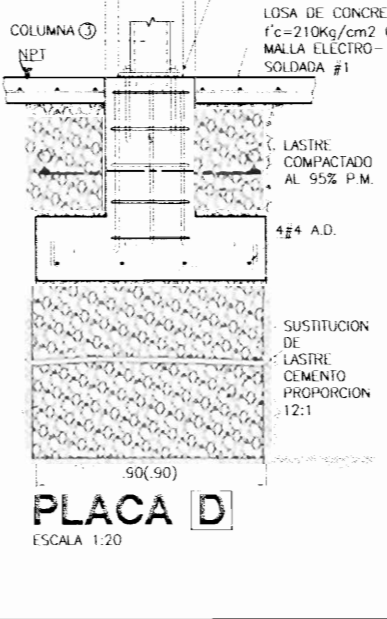
**PLACA A**  
ESCALA 1:20



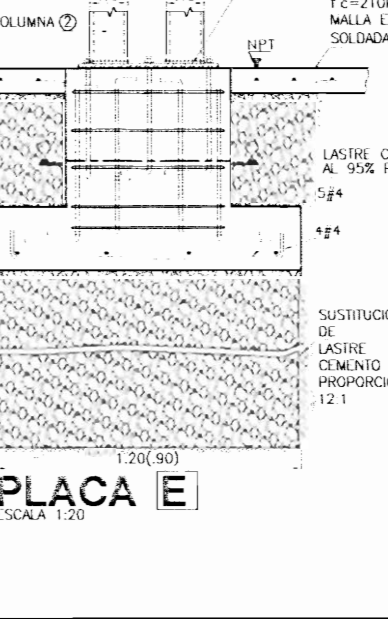
**PLACA B**  
ESCALA 1:20



**PLACA C**  
ESCALA 1:20



**PLACA D**  
ESCALA 1:20



**PLACA E**  
ESCALA 1:20

10 MAR 2008  
DIBUJO DE PROYECTOS

APROBACION COMISION REVISORA DE PERMISOS DE CONSTRUCCION

PROYECTO: REMODELACION ANTIGUO EDIFICIO DEL CUÑO  
PROPIETARIO: MINISTERIO DE CULTURA Y JUVENTUD  
PROVINCIA: SAN JOSE | CANTON: CENTRAL | DISTRITO: EL CARMEN

LINA PEREZ VILLALBA, ARQUITECTA (RUC 1010101010)

INGENIEROS: ROY ACUNA PRADO, MELISSA SOTO C.

DIBUJO: am

PROFESIONAL RESPONSABLE DE DISEÑO

NOMBRE: ROY ACUNA PRADO

FIRMA: N° REG. IC 1400

PROFESIONAL RESPONSABLE DE DIBUJO TECNICO

NOMBRE:

FIRMA: N° REG.

INFORMACION REGISTRO PUBLICO: PROPIETARIO: MINISTERIO DE CULTURA, JUVENTUD Y DEPORTES

N° CATASTRO: E 52 251 84

CITA:

CONTENIDO: PLANTA DE CIMIENTOS Y COLUMNAS, DETALLE DE PLACAS Y COLUMNAS, DETALLE DE DADO Y VIGA DE AMARRA

EN: PLANTA | FECHA: | LANA ESPANTALLADA | LANGRANAL

NOVIEMBRE 2008 | EST 01





